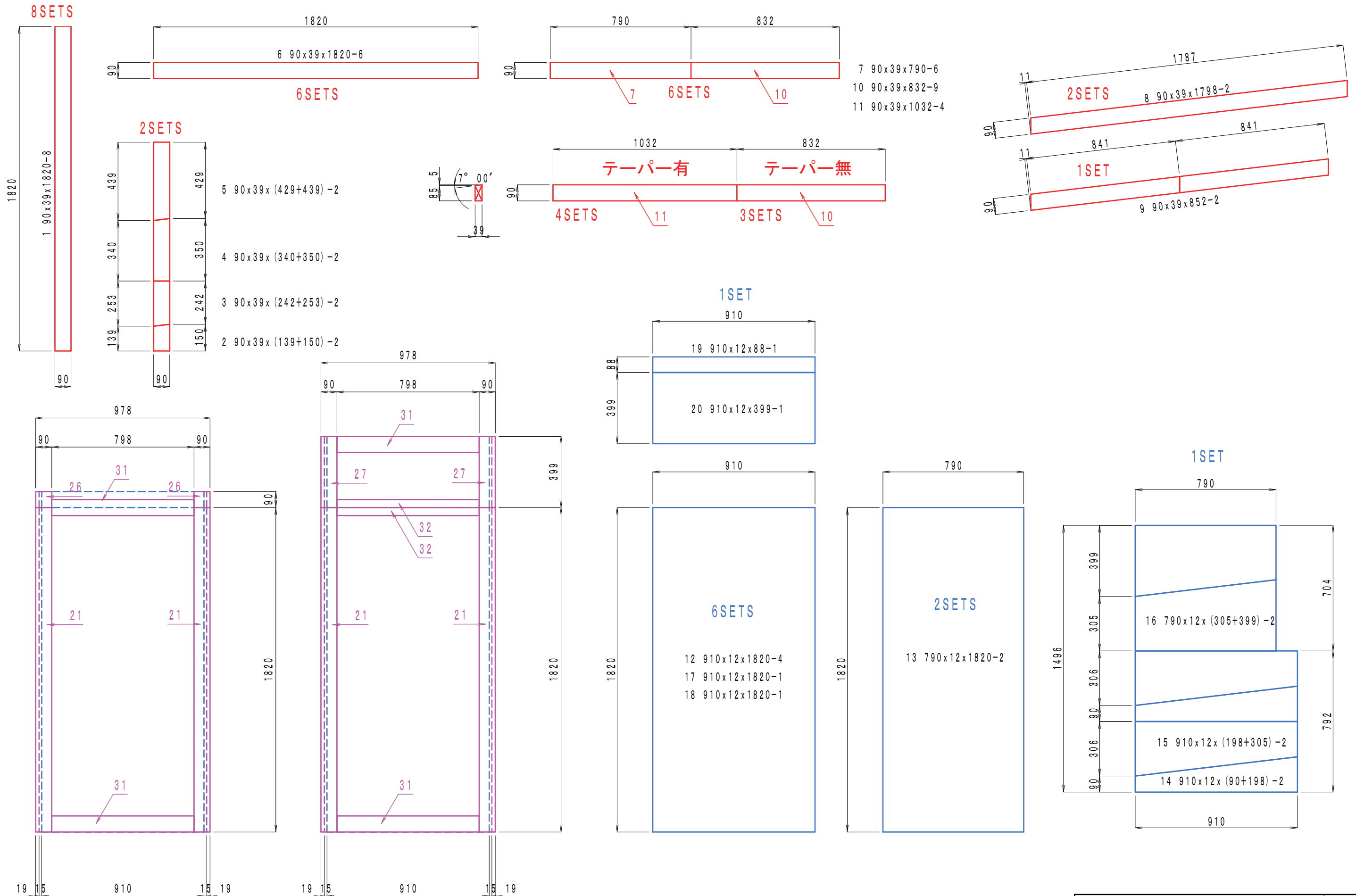


家裏物置

S=1:20

1

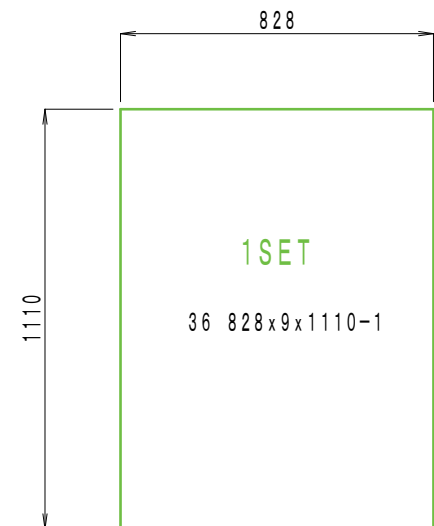
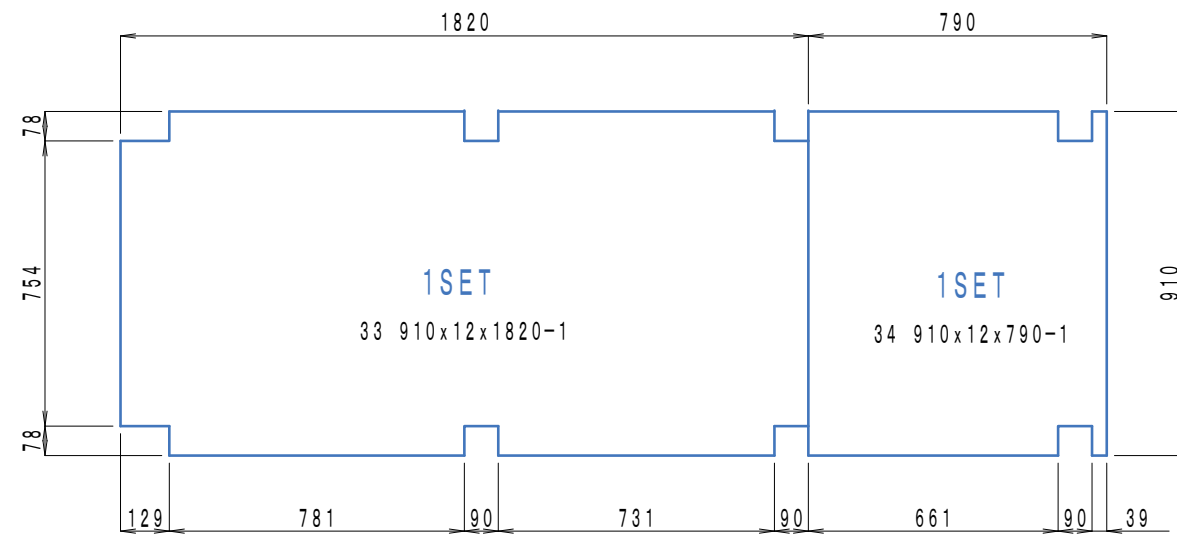
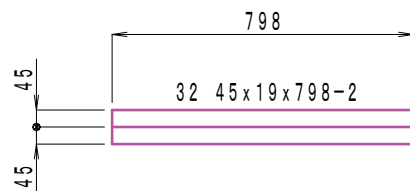
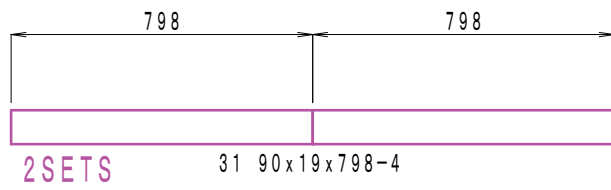
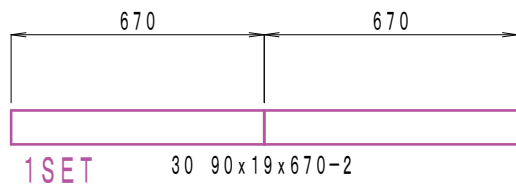
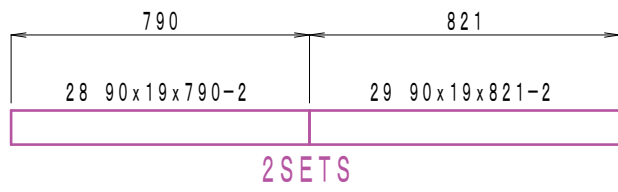
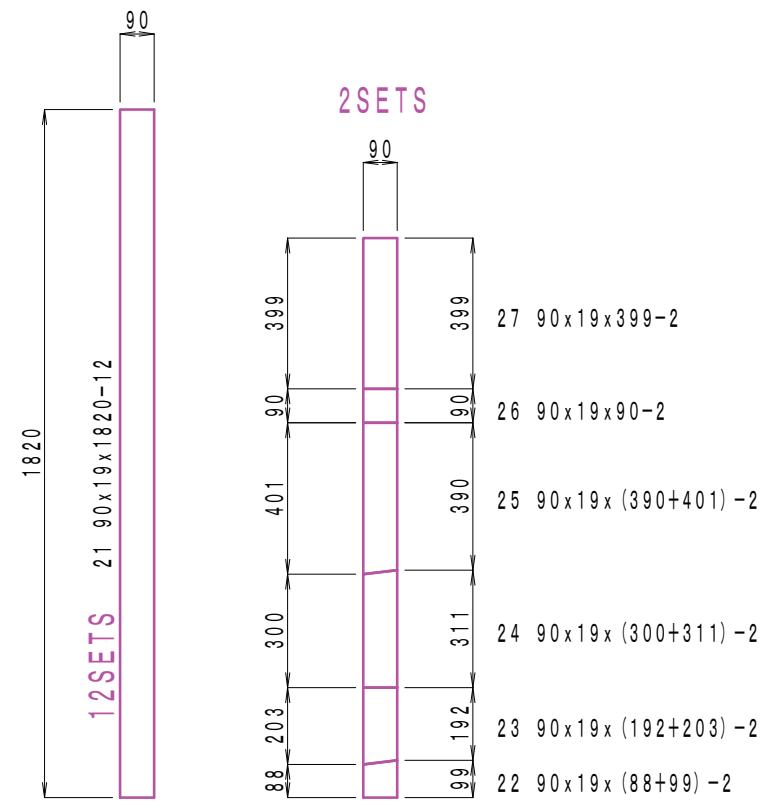
3



家裏物置

S=1:20

2
3



材料表

材料	番号	数量	単価	金額
2×4 6feets	1	8	321	2,568
	2~5	2	321	642
	6	6	321	1,926
	7, 10	6	321	1,926
	10, 11	4	321	1,284
	8	2	321	642
	9	1	321	321
	小計		29	
1×4 6feets	21	12	210	2,520
	22~27	2	210	420
	28~29	2	210	420
	30	1	210	210
	31	2	210	420
	32	1	210	210
	小計		20	
針葉樹合板 12mm	12, 17, 18	6	1,274	7,644
	13	2	1,274	2,548
	14, 15, 16	1	1,274	1,274
	19, 20, 34	1	1,274	1,274
	33	1	1,274	1,274
小計		11		14,014
OSB合板 9mm	35	1	1,166	1,166
	36	1	1,166	1,166
小計		15		2,332
ポリカ波板 L=2.73m		2	2,005	4,010
小計		2		4,010
合計		75		33,865